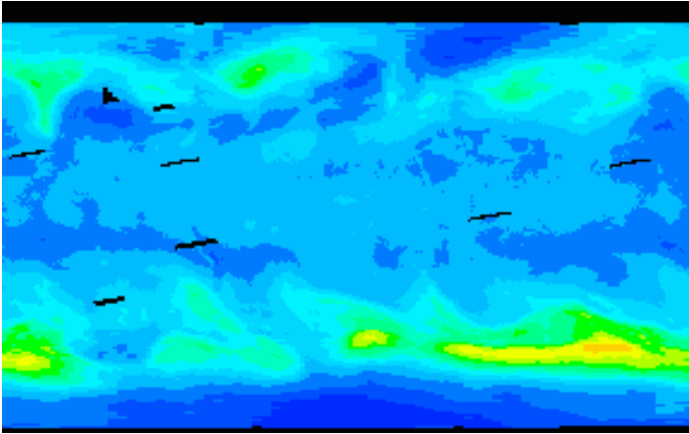
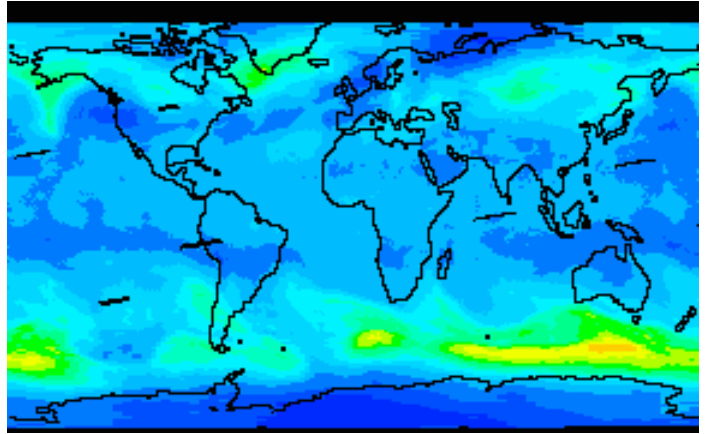


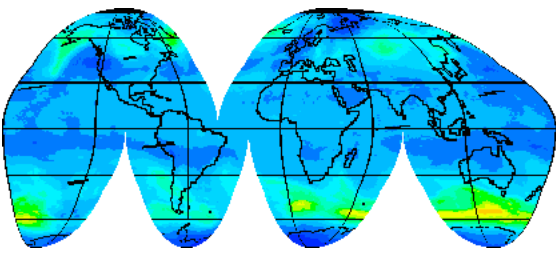
Exercise 1: Question 5



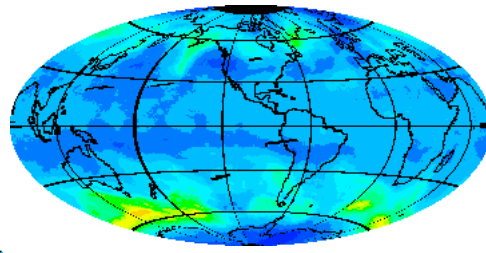
Exercise 1: Question 6



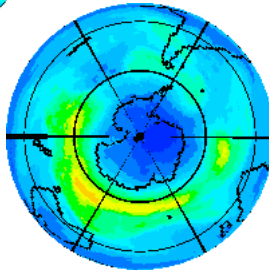
Exercise 1: Question 9



*Goode Homolosine*

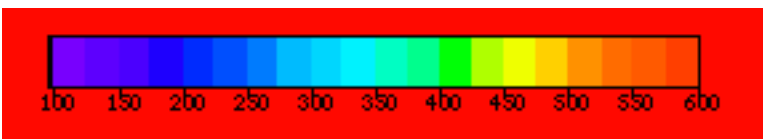


*Hammer 100 W*



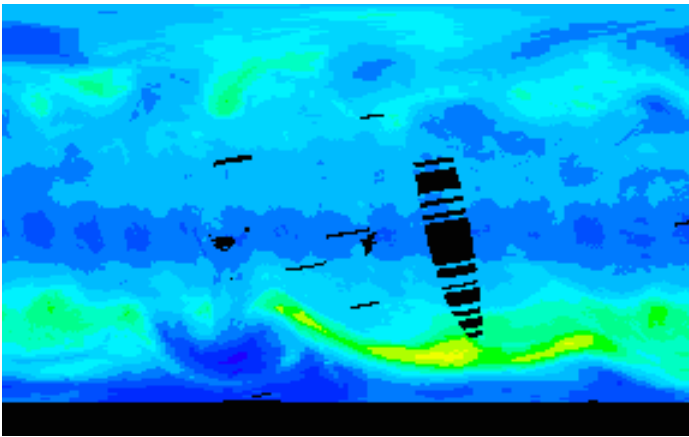
*South Polar*

TOMS Color Bar

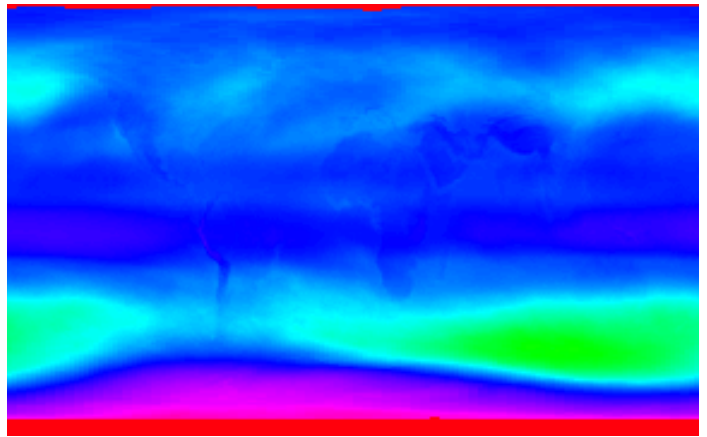


Because of color variations between monitors and printers, use this color bar as a guide for interpreting these images.

Exercise 2: Question C



Exercise 2: Question 8



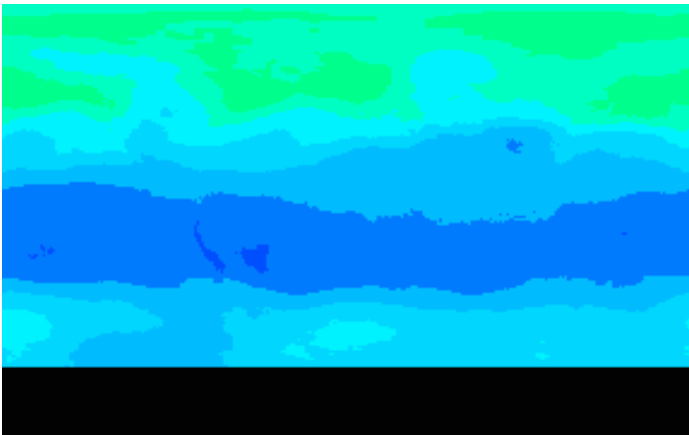
Exercise 3: Question 1



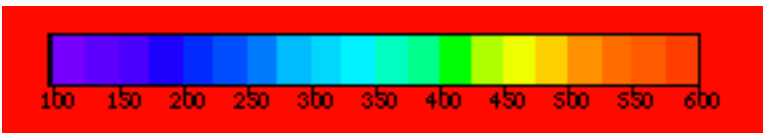
Exercise 3: Question 2



Exercise 3: Question 3

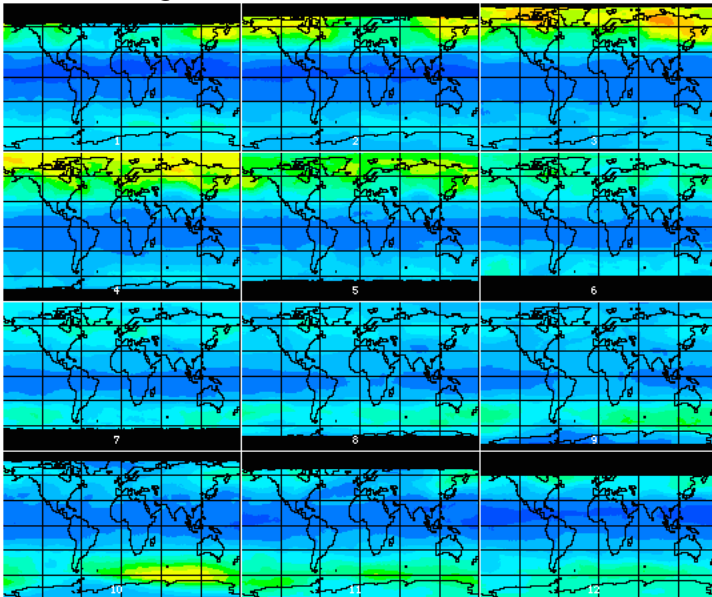


TOMS Color Bar

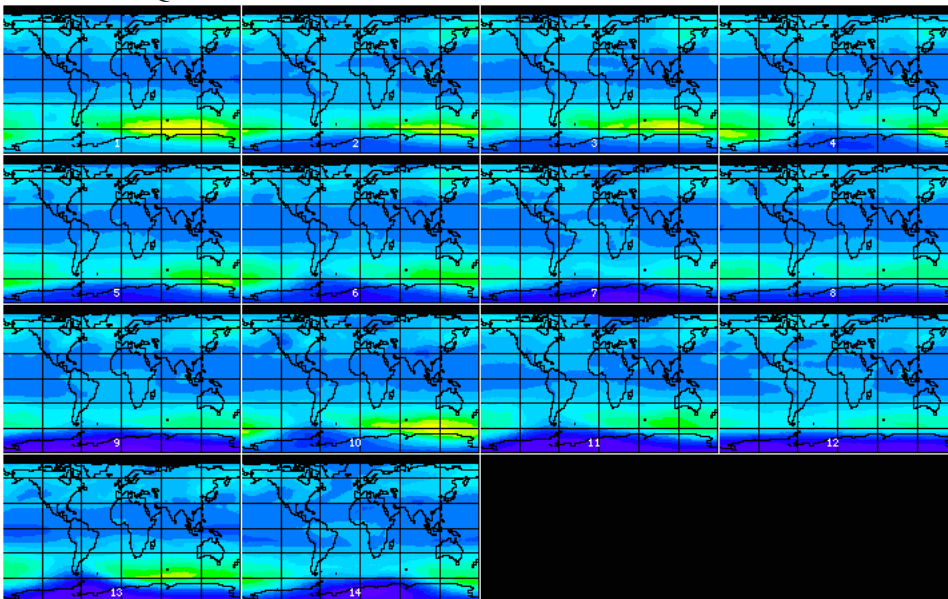


Because of color variations between monitors and printers, use this color bar as a guide for interpreting these images.

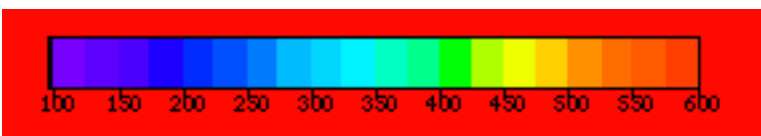
Exercise 4: Question 2



Exercise 5: Question 1

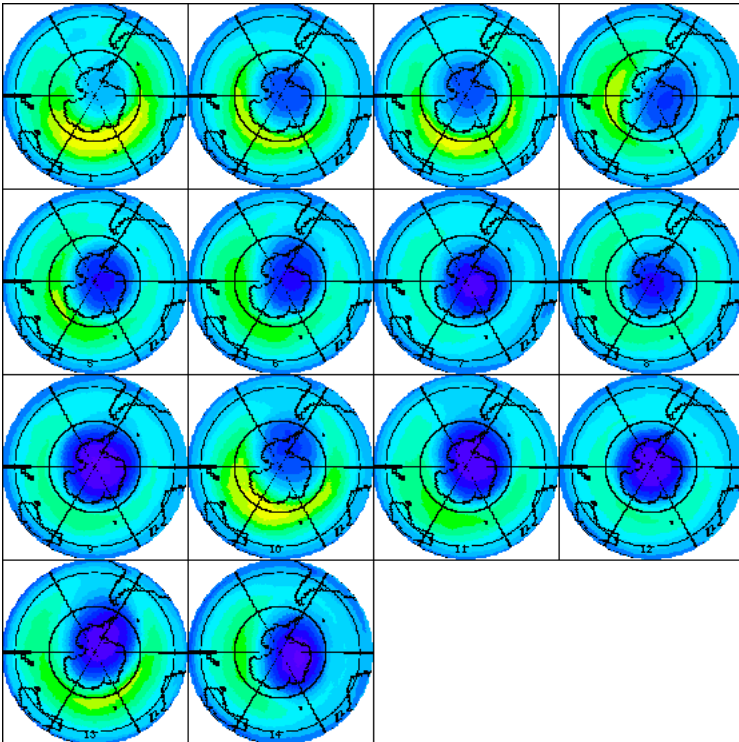


TOMS Color Bar

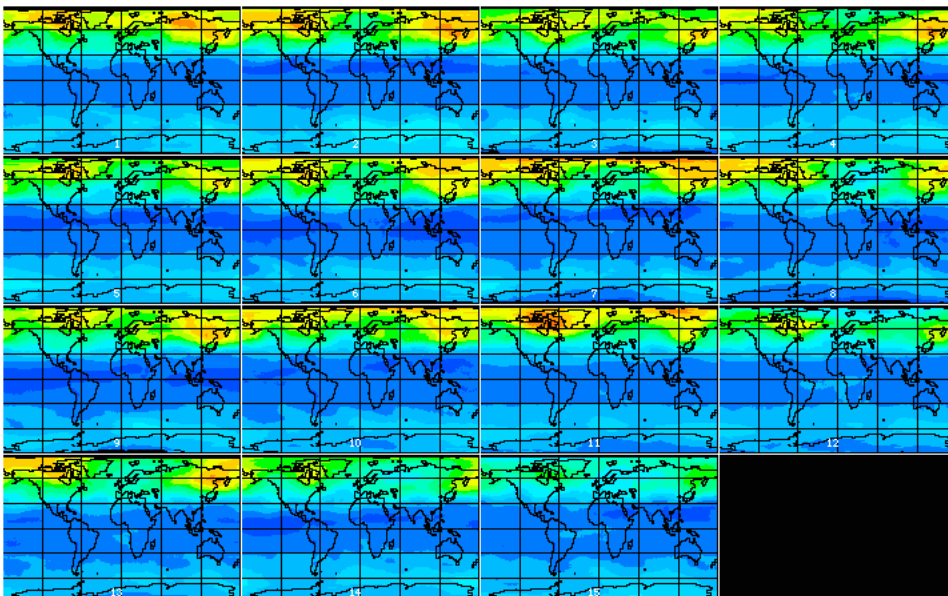


Because of color variations between monitors and printers, use this color bar as a guide for interpreting these images.

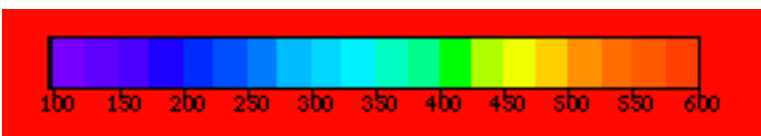
Exercise 5: Question 3



Exercise 5: Question 8

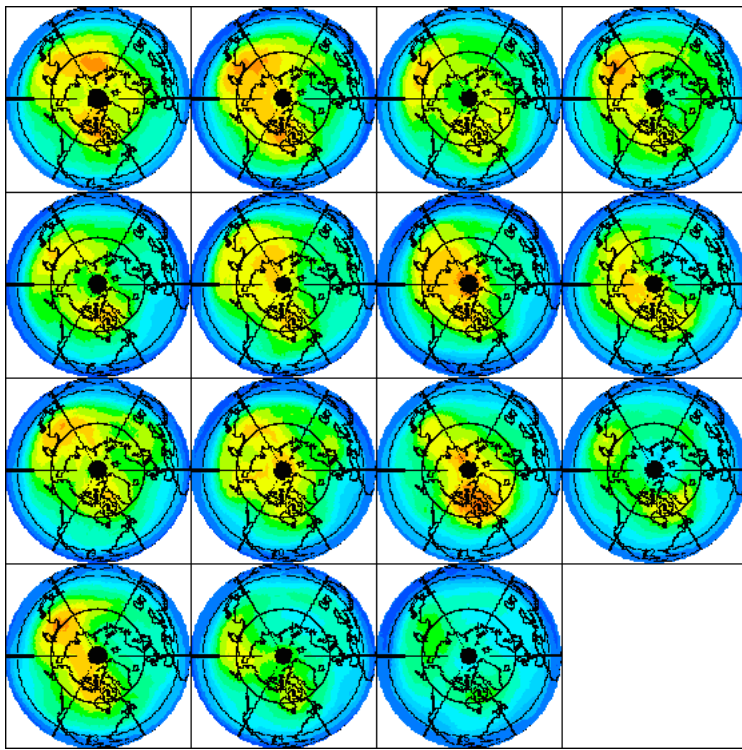


TOMS Color Bar



Because of color variations between monitors and printers, use this color bar as a guide for interpreting these images.

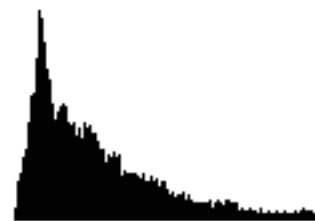
Exercise 5: Question 9



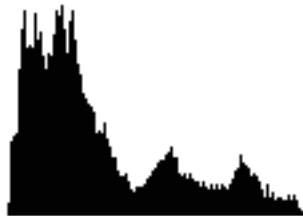
Exercise 6: Questions 1–2



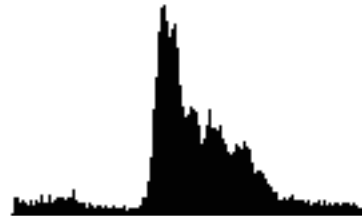
*March 1979*



*October 1979*

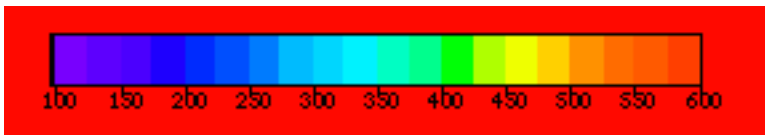


*March 1992*



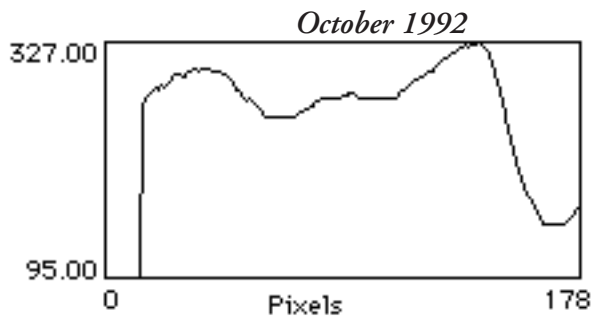
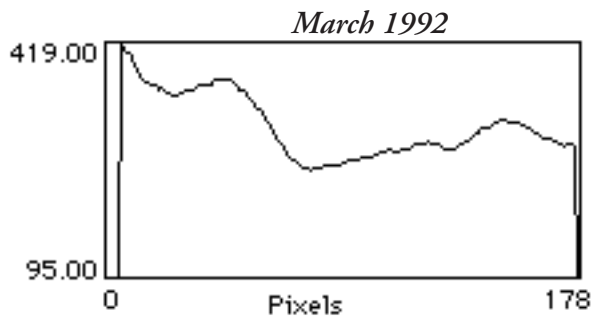
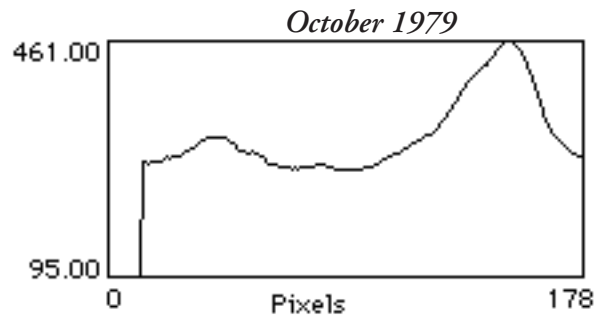
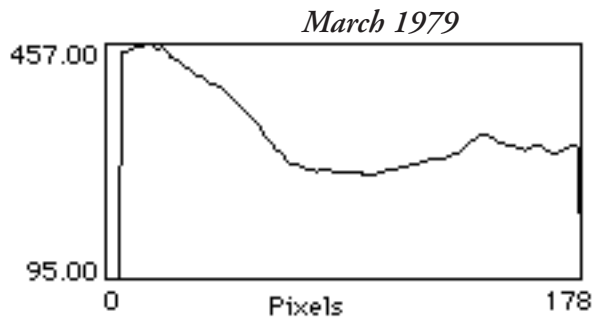
*October 1992*

TOMS Color Bar

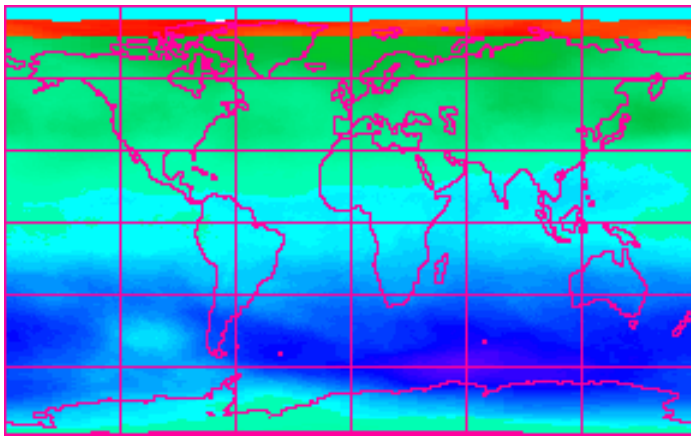


Because of color variations between monitors and printers, use this color bar as a guide for interpreting these images.

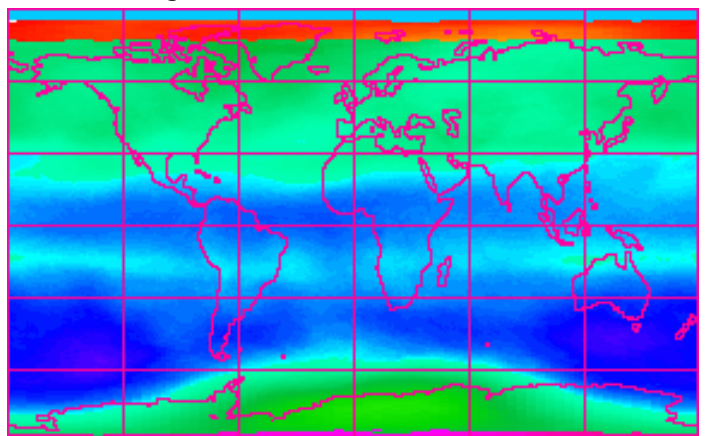
Exercise 6: Questions 4–5



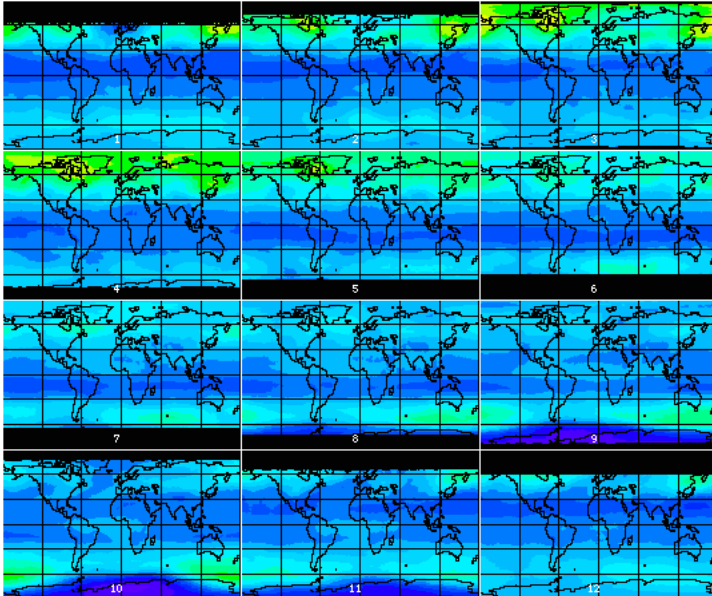
Exercise 6: Question 8



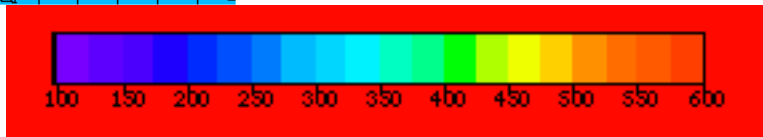
Exercise 6: Question 9



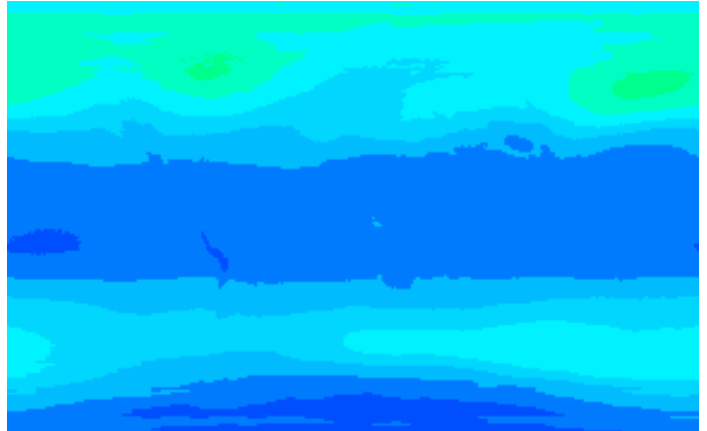
Exercise 7: Question 1



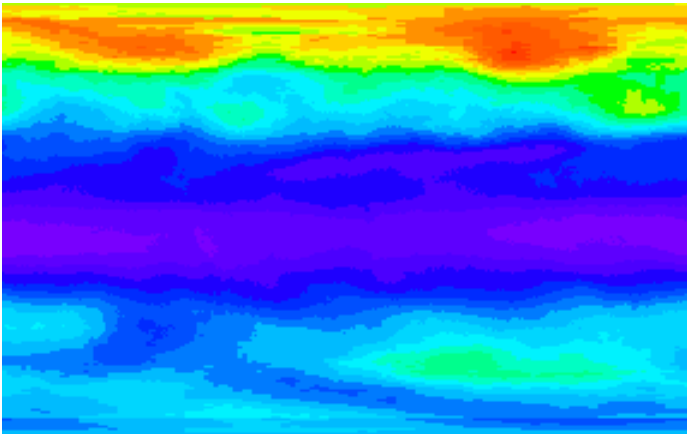
TOMS Color Bar



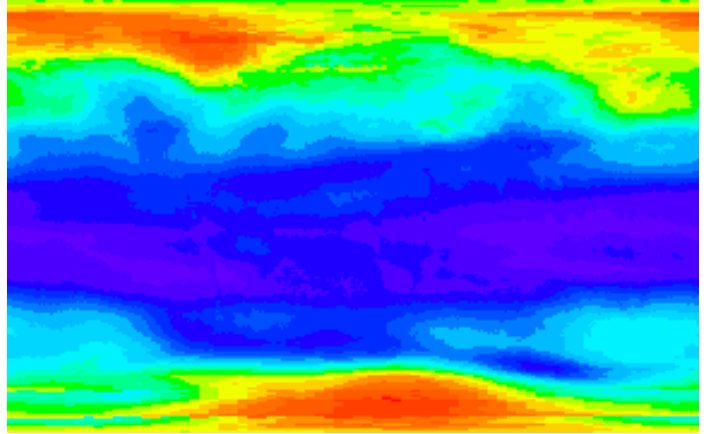
Exercise 7: Question 7



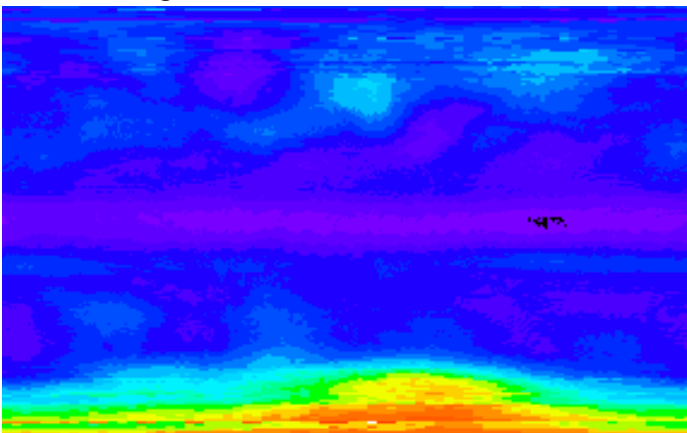
Exercise 8: Question 1



Exercise 8: Question 3



Exercise 8: Question 5



SD Color Bar

